

2024 MONTANA PRIMARY ELECTION VOTER GUIDE

 **FORWARD MONTANA**

YOUR VOTE IS YOURS TO DECIDE

WE HOPE THIS INDEPENDENT, LOCAL, NON-PROFIT PREPARED INFO HELPS.

Who is FORWARD MONTANA

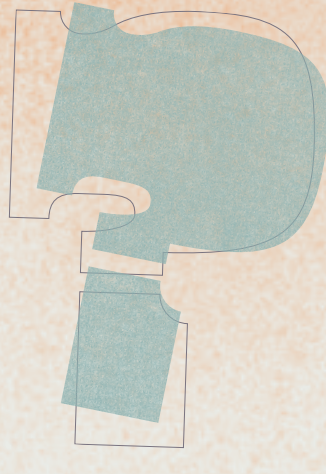
Forward Montana is a nonprofit organization dedicated to developing, mobilizing and electing a new generation of leaders across Montana. Since our establishment in 2004, we've grown into the largest youth civic engagement organization in Montana with year-round staff in Billings, Bozeman, Butte, Missoula, Glendive, and in the Flathead Valley.

We build political power with and for young Montanans by driving a culture of civic engagement and by electing leaders that are representative of the needs and vision of our generation. Every year, Forward Montana creates voter guides to help Montanans cast an informed vote across their entire ballot.

 [FORWARDMONTANA.ORG](http://forwardmontana.org)  [@FORWARD_MONTANA](https://www.instagram.com/forward_montana)

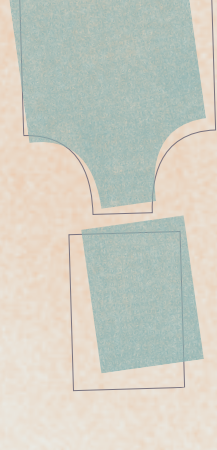
WTF is LGR?

Local government review (LGR) is a process where you get to decide how your local government runs! LGR establishes a study commission to review the powers, form, and structure of local government entities—think city council structure v. a city commission! Every ten years, the Montana Constitution grants voters the power to review every county and municipal government in the State. In June, residents will vote on whether or not they wish to start this process. If you live in an incorporated city, then you will vote on LGR for both your city and your county.



What Happens Next?

If the electorate of your county and/or municipality votes 'yes' for local government review then in November, you will elect members of the LGR study commission. The LGR study commission will review the current structure of local government and alternative forms of government over the course of a year. This study commission may make recommendations about changes to the form of government. Citizens will then vote in 2026 to adopt or reject the study commission's recommendations.



Why Should I Vote on LGR?

This is an opportunity for your voice to be heard and to ensure that your local government accurately represents you! LGR is a unique feature of Montana's awesome Constitution and fun fact—Montana is the only state in the nation that provides for a regular local government review process!

➤ A **'yes'** vote on LGR means that you support a review of the powers, form, and structure of your local government.

➤ A **'no'** vote on LGR means that you do not support a review of the powers, form, and structure of your local government.

ELECTION DAY IS TUESDAY, JUNE 4TH

Voter Registration Deadlines

May 10: Absentee Ballots Are Mailed Out.

- If you are registered absentee and you do not receive your ballot by May 17, check in with your local county elections office.

June 3 @ 12pm: Final late voter registration deadline.

- After May 6, voter registration forms must be submitted in person at your county elections office. Late voter registration closes at 12PM on June 3. *You can still register and vote in-person through 8pm on Election Day June 4 at your local county elections office.*

June 4: Election Day!

- At 8 p.m. all ballots must be received by your county elections office. Vote in person, turn in your ballot to your local county elections office, drop it off at a drop box, or mail your ballot by May 28, (i.e., 7 days before the election) to ensure it is received on time.



If you are mailing in your ballot, make sure to put a stamp on the envelope. Ballots must arrive at the county elections office before or on election day.

To check your voter registration, find your polling location, or verify that your ballot has been accepted, visit the My Voter Page at <http://prodvoterportal.mt.gov> or simply click the link.

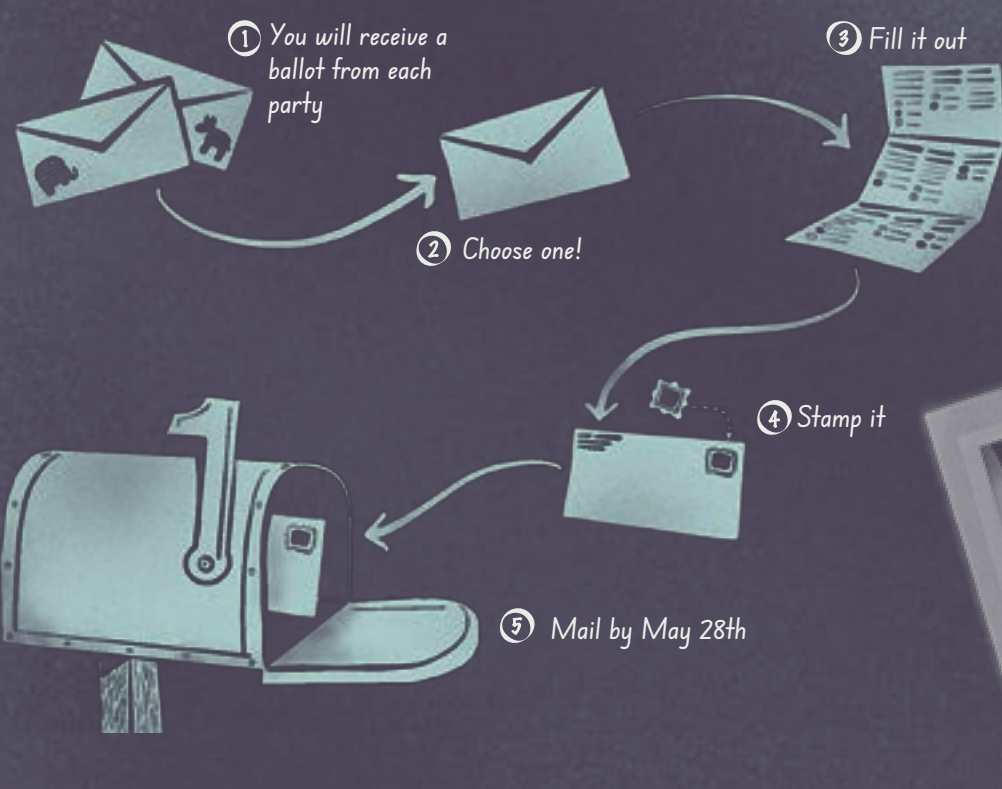
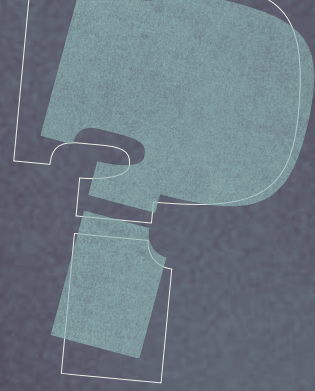


For a list of county election offices, visit our online voter guide at <http://forwardmontana.org/voterhub> or click the link.



How Do I Vote in the Primary Election?

#DYK that in Montana there is no party registration? That is why we have open primaries. That means you can vote in any party's primary election, but you can only choose one! You'll receive a ballot from each party and choose the ballot you want to vote! If you are a registered absentee voter, you will receive your ballot in the mail. If you are not registered to vote absentee, then you will vote at your polling location.



Why Should I Vote in the Primary Election?

Primaries are an important part of the democratic process. The primary election allows you to select the candidates that will represent the party as the nominee during the general election! This year you'll be voting on a number of offices including state executive offices like Governor and Auditor as well as US Senator, US Representatives, Montana Supreme Court Justices, State Legislators, and local government review!

Stay Vote Ready!

Need to help your friends update their voter registration information? Scan the QR code or head to <http://mtvr.org/fmt> to register or update your voter reg info!

